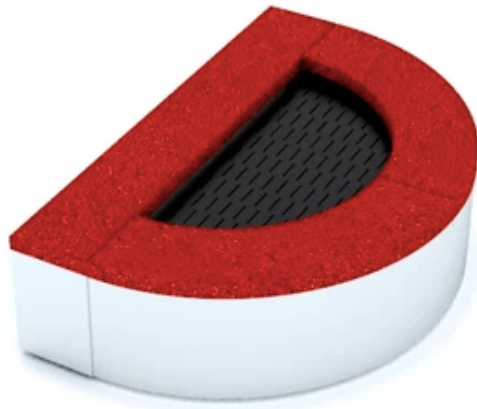


Product: **Half circle trampoline**



**Type:** Inground trampolines  
**Producer:** ALUPLAY k.s.  
**Dimensions:** 1500 x 1000 x 400 mm  
 (length x width x height)  
**Safety area:** 4500 x 4000 mm / 15 m<sup>2</sup>  
**Platform height:** -  
**Max. fall height:** 900 mm  
**User group:** 3-15 years  
**Spare parts availability:** Producer

**Materials used:**  
 Construction and support structure made of hot-dip galvanized steel. Jump mat: made of polyamide lamellas, threaded on a stainless steel cord coated with a PVC sheath, attached to springs, which are attached to the rods inside the construction. The edges of the jump mat are covered with a 40 mm thick and 250mm wide EPDM / SBR rim, with a polyurethane-based adhesive glued to the frame. Trampoline has a 2-point opening for service purposes. Spare parts, mat and rim designs upon request. Max users per trampoline: 1 (one person at a time). Mat deflection 25cm (+/- 3cm).

